



BPS NEWS BULLETIN

Issue No 27: September 2025

Welcome to a new BPS season

The 2025/2026 season has just kicked off in our new premises and we are set to enjoy an exciting and diverse programme of events organised by Marcia Hood-Leeder. The programme is now [available](#) on the BPS website and members can pick up hard copies at the weekly meeting. Thank you to Angela Ford for launching the season with such an interesting presentation.

At our first meeting there were plenty of parking spaces in the school playground and in future weeks, although some spaces will be reserved spaces for speakers and members with special needs, any free spaces can be used by members. No-cost parking is also currently available after 6.30 pm in some of the streets surrounding the school but check that the sign indicates this is still the case.

The nearest rail station is Beckenham Junction where the tram stop is also located. Buses 227 and 54 stop close to the school. As usual, arrive by 7.45 pm for an 8pm start.



Beckenham Photographic Society
Meets at Harris Primary Academy
Beckenham Green BR3 5JG
Wednesday evenings (8pm-10pm)
from September to May
New members and visitors welcome
Please see our website for details:
www.beckenhamphotosoc.org.uk
Email: spenquinn@beckenhamphotosoc.org.uk



Andrew Moss putting finishing touches to the BPS shed at our new venue. Image by Stanley Kemp.

News from the Committee

The Committee has held its first meetings and got through a great deal of business. Members will be able to read the minutes of the meetings on the members' section of the website. Some important decisions relate to internal competitions and the annual conference following the members' vote on competitions and discussion at the last AGM.

Key points from the internal competition changes are that for a trial year judges will no longer mark the prints and pdis entered into competitions. Instead, the judges will select their top four plus any highly commended images. Then following each competition, the Internal Competition Secretary will assign marks: 20 for 1st, 19 for 2nd, 18 for 3rd and 17 for 4th plus 15 points for highly commended entries. These changes will be reviewed at the end of the season.

There is some relaxation in presentation for those entering prints in the standard class. Although standard entrants are encouraged to mount their prints on card, they may now just be backed by card. Advanced level prints must continue to be mounted. All prints must be handed in the preceding Wednesday before a competition. Digital image dimensions are also changed: they should now be now larger than 1600 pixels wide and 1200 pixels high.

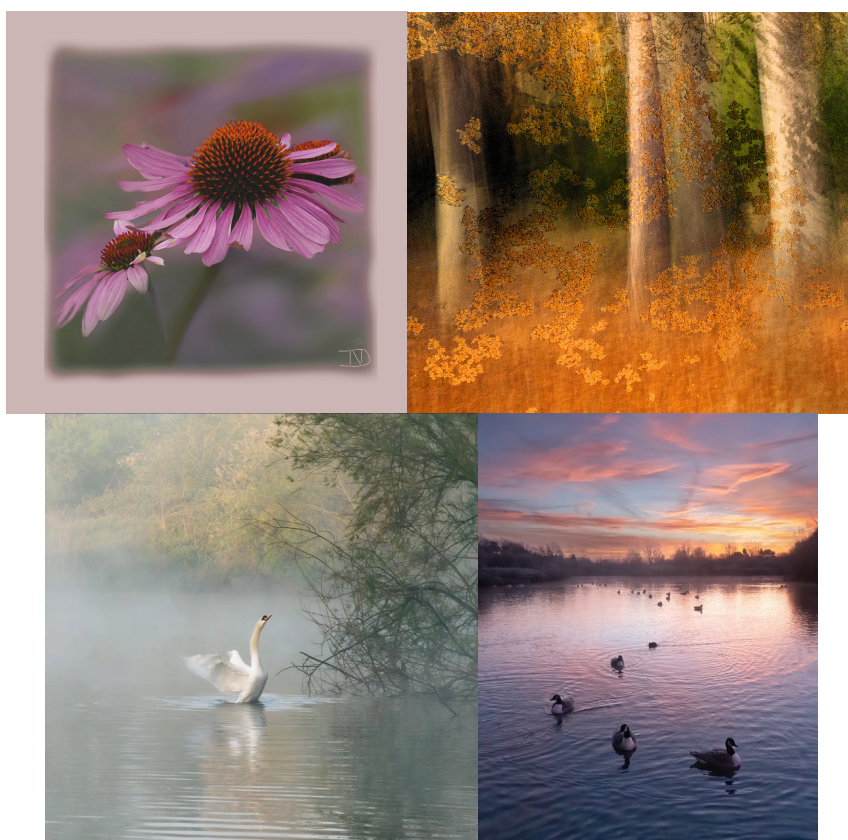
Full details of the new rules can be found on the Society's website. These include the decision to adopt the PAGB approach to the use of AI in competition entries. The PAGB

permits the use of AI tools for improving or manipulating work that has already been captured by a photographer. However, any use of AI – Generative AI - that creates new content or elements which were not part of the photographer's original work is forbidden.

Finally, the committee has agreed to trial a non-judged exhibition this season. Look out for details of new arrangements for the special Wednesday evening that will replace the normal awards event.

Success for BPS members in St Christopher's competition

Earlier in the summer, St Christopher's Hospice invited photographers to submit images to be displayed in their wards. They asked for calm and restful images depicting nature, people and places taken in Bromley and other surrounding boroughs. Great news: images from three BPS photographers were chosen. Congratulations to Nenne Van, Angela Ford and Carole Dowd – Carole had two successful images. Their images are below:



Interestingly, St Christophers decided not to select any images of people – partly because there were concerns about whether individuals had given consent for their portraits to be taken. BPS has now produced forms that can be used to collect consent for images of people to be used for publicity or other reasons such as competition; this is especially important when children are involved. You will be able shortly to find copies in the members' area of the website.

Stocking up on mount board

Here's a great opportunity to stock up on mount board for the coming season, including your prints for the Annual Exhibition.

Lesley Rees is organising a bulk order for mount board from Cotswold Mounts. As Wideangle Market no longer carries any stocks, please make sure you take this chance to

buy your boards with no minimum order amount (usually £20 + VAT) and sharing any delivery cost (usually £9 for orders under £100). A small margin is added for BPS funds. Mount boards are available in 4-packs in standard camera club size (40x50cm), ready for you to cut your own aperture. Choose white or cream core: white core is archival quality and costs a little more than cream. Cotswold Mounts can also cut apertures to your specific requirements - in packs of 4 same-size apertures only. Though these cost £1/£2 extra per board, they are a cost-effective option if you have difficulty cutting your own. Various sizes of pre-cut backing boards (plain or self-adhesive) are available in packs, or you can buy an A1 sheet of lightweight backing to cut your own. Framing tape and presentation bags are also available.

Please email Lesley (lesleyrees@btinternet.com) with details of your order no later than **Wednesday 24 September** and she will give you an indication of cost. Please state number of packs and colour - don't just say 'white' as there are lots of different whites! - and whether white or cream core - as well as any backing, tape and bags. Cotswold Mounts [website](#) gives details of colours for camera club boards and information on other products. Please don't hesitate to ask Lesley in person or by email if you have any queries.

Members' prints on show in RPS exhibitions

Prints by several BPS members are included in two upcoming Royal Photographic Society exhibitions.

RPS South East London microgroup is holding its first public exhibition. 'VIEWPOINTS', featuring 50 prints by 25 members, will be on show in the New Gallery at Ripley Arts Centre, 24 Sundridge Avenue, Bromley BR1 2PX from **16th to 29th September** (usually open Mon-Thurs 9.30-4.30 and mornings only at weekends - tel. 020 8464 5816 to check opening times). There is some parking on-site as well as in nearby side-streets. Bus route 314 runs along Sundridge Avenue and serves several local stations, including Bromley South and Elmstead Woods.



Everyone is welcome to join the exhibitors at the Open Evening - with refreshments - between 7 and 9pm on Thursday 18th September. Please speak to Lesley or David Rees if you want further information.

RPS Visual Art Group's 2025 Print Exhibition will be on display at the Landmark Arts Centre, Ferry Road, Teddington, TW11 9NN from Saturday 27th Sept to Sunday 5th October, alongside Richmond & Twickenham Photographic Society's Annual Exhibition. The venue is open from 10am to 4pm daily and admission costs £4 (children free).

25/26 Season exchange with Perigny

Don't forget to keep looking for suitable images for our annual exchange with Perigny as the deadline looms ever closer. The theme this year is It's in the Wind – Dans Le Vent. As well as flying objects you can go further because Dans Le Vent also means to be in fashion or 'with it'.

Events for Your Diary

Last call for the BPS photo walk around Margate on this Saturday, 6th September. The walk is being led by former BPS member Jackie Andrews – now a local resident. The plan is to meet at Margate Station at 9:30 and kick-off with a visit to the Bus Cafe for coffee and snacks. At 10:30 we will head off to Dreamland for an hour or so. After that we will walk along the beach and visit the market, then to the Turner Gallery followed by the graffiti and street art walk and tea at Walpole Bay. Leave the car behind and meet at Bromley South Station in time to catch the 07:57 which gets into Margate at 9:24.

The group will probably walk about three or four miles throughout the day with plenty of refreshment breaks along the way. Wear comfortable walking shoes and bring lenses and camera equipment of your choice. If anyone wishes to stay for the sunset, golden hour is at 18:48 and sunset at 19:32.

If you would like to join this walk or have any questions, please contact Julia Andrew andrew.julia@gmail.com

The next Nature group meeting has been moved to Tuesday 30th September at the Bricklayers Arms, Beckenham. This is an informal meeting with everyone welcome to attend. If you have images to share, bring along your laptop or put them on a memory stick. The group will also discuss great places to find wildlife and consider some club visits.

Some great feedback received about the Dennis Morris: Music + Life exhibition at **The Photographers' Gallery** until September 28th. It celebrates the work of the British-Jamaican photographer famous for his intimate portraits of icons such as Bob Marley, the Sex Pistols and Marianne Faithfull. Go to <https://thephotographersgallery.org.uk/whats-on>.

Still worth seeing the V&A's special display of **American Photographs** which is open until May 2027. Members might also be interested in a one-day course Fashion photography: the Look and the Lens which will run both in person and online on 31st October. Details [here](#).

Coming up is the **Taylor Wessing Photo Portrait Prize** exhibition with winners on display at the National Portrait Gallery from 13th November and the **Astronomy Photographer of the Year** with over 100 photographs on show at the National Maritime Museum from September 13th.

THANK YOU for reading this News Bulletin. Look out for Issue No 28 in late November. It is really appreciated if you can contribute articles, feedback, images, news items, suggestions, advice, announcements. Please send to beckenhampscomms@gmail.com. Deadline for copy for the next issue is midday on 17th November.