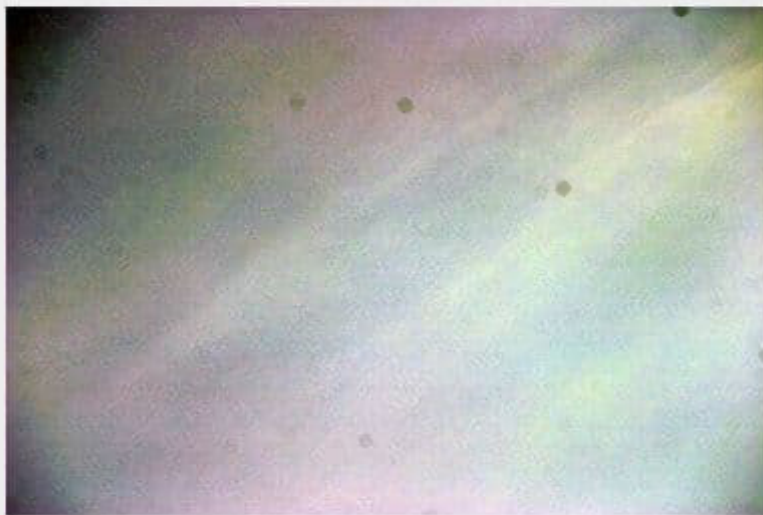


## How to Check Your Camera Sensor for Dirt

Although a vast majority of modern cameras come with a self-sensor cleaning option, it is still likely that your sensor needs a clean.

To test for dust on your sensor, stop down to the smallest aperture on your lens (the largest f-stop) and the lowest ISO (to avoid mistaking grainy images for dust). Then take a photo of a neutral/white background (a piece of paper or white wall will do fine).

Open this image in your choice of photo editing application, adjust the brightness/contrast of the image and zoom in to identify any dark specs.



## What Equipment do you Need?

Although you will find many accessories for camera cleaning, there is only a handful of tools you really need to clean a sensor: The loupe is a desirable item.

*Rocket Blower*

*Sensor Cleaner Swabs (make sure you buy correct size for sensor) full frame or crop sensor.*

*Sensor cleaning liquid*

*Sensor Loupe*

*Lens Cleaning Pen Brush with carbon end*

*Sensor brush*



## How to Clean Your Camera Sensor

### 1. Make sure your Camera is Fully Charged

This is important as many cameras will not allow you to perform a manual clean unless the battery is at full power.

### 2. Activate Auto Cleaning Mode

Many modern cameras have an auto cleaning mode, so activate that by finding the settings on your camera (if your camera doesn't have this mode – don't worry!) The auto cleaning mode produces a series of micro-vibrations that shake the larger dust loose from the sensor.

### 3. Clean the Exterior

By cleaning the body of your camera this will minimise the risk of more dust and dirt getting into the sensor.

### 4. Clean your Workspace

Exactly the same reason for cleaning the camera's exterior.

### 5. Activate Manual Cleaning **(Miss step if Mirrorless)**

To access the camera's sensor the mirror needs to be permanently set to up. To do this, look for the "manual cleaning" option in your camera's settings (check the manual if you cannot find it). Detach the camera lens and select. You will then hear the mirror click back and reveal the sensor.

## 6. Examine the Sensor

Once the mirror is up and the sensor is out, take the Sensor Loupe and examine the sensor. The bright LED lights and magnifier will reveal where the dust particles are on the sensor.

## 7. Use a Blower Brush

Using the Blower blow air onto the camera's sensor to remove large particle (*camera should be held upside down*), being extremely carefully not to touch the sensor with the end of the blower.

## 8. Use Cleaning Swabs

Once you have the right sized cleaning swab for your camera's sensor (either full frame or APS-C), using little force wipe across the sensor just once, one way. Flip the swab over and wipe the other way, only once. If you need to repeat, throw away the swab and use a new one.

## 9. Examine the Sensor Again

Once you have cleaned the sensor, examine it once again through the Sensor Loupe to check that all particles have been removed.

## 10. Finished

Turn off the camera, which will release the camera's mirror to cover the sensor and attach the lens. Then finish off by taking another reference photo (using a clean lens) to see how clean your sensor is now, compared to when you first started.

## Costs

### Fixation

All full-frame cameras £66

All crop-frame cameras £48

### Jessops

1 hour sensor clean - £50

Same day sensor clean - £40

2 Day sensor clean - £30

### Do it Yourself

*Rocket Blower* £12

*Sensor Cleaner Swabs (make sure you buy correct size for sensor) full frame or crop sensor. £15 for 20*

*Sensor cleaning liquid* £9

*Sensor Loupe.* £22

*Lens Cleaning Pen Brush with carbon end* £10

*Sensor brush.* £20

Total £88 for 10 cleans (assuming 2 swabs a clean = £8.8 per sensor clean

*Then*

Total £24 (just swabs and liquid) for 10 cleans = £2.4 per sensor clean

**Prices can vary dependent on source and if part of a kit, quoted prices are correct from Amazon as at Aug 2025**